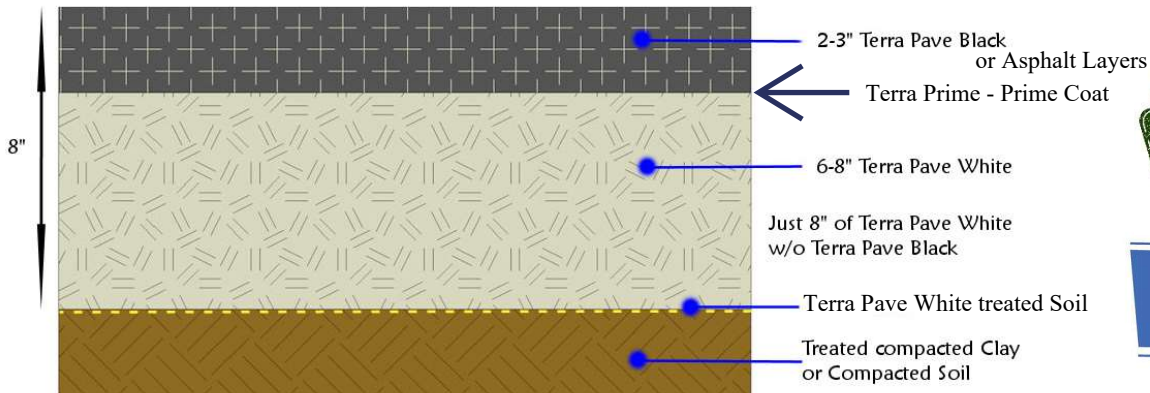


# Comparison of Terra Pave Product spray on 8" of road aggregate vs. Asphalt & Concrete

8" TPWhite or 8" TPWhite/Black



**SUPERIOR QUALITY**



2-inch layer of a 12.5 mm well-graded wearing surface
3-inch layer of a 12.5 mm well-graded asphalt binder layer with a finer aggregate blend
4-inch layer of a 25 mm well-graded intermediate asphalt layer
4-inch layer of a 25 mm well-graded intermediate asphalt layer
3-inch layer of a 25 mm well-graded asphalt base layer

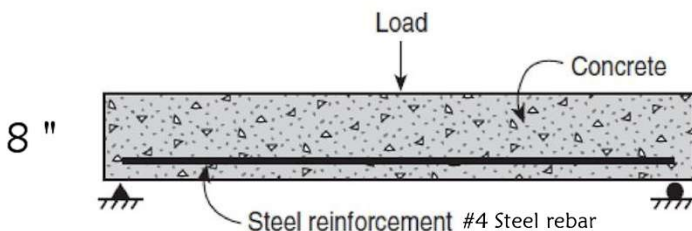
Different Asphalt Mixtures in the Pavement Structure



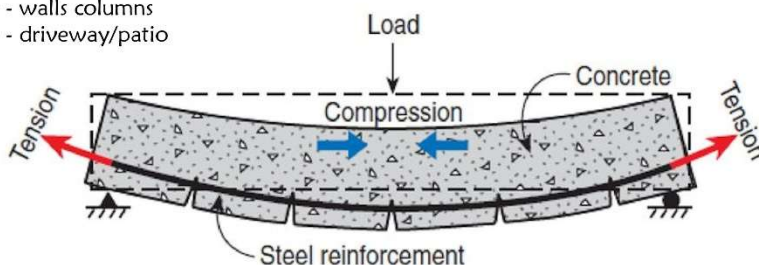
**ASPHALT STRUCTURE**



## Why Use Reinforcement in Concrete?



- #5 rebar - footers and foundation
- #4 rebar - walls columns
- #3 rebar - driveway/patio



**CONCRETE STRUCTURE**

